

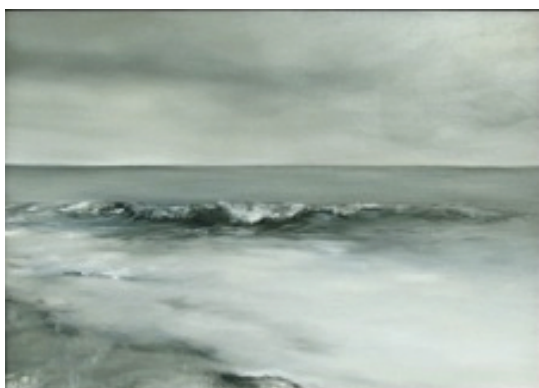
PYO GALLERY LA

GONE FISHING

August 13, 2011 - September 24, 2011

PYO GALLERY, L.A. is pleased to present *GONE FISHIN'*, a summer group exhibition of paintings and mixed media works that explore the theme of water as a conduit for inspiration, and as a life-sustaining element. While some paintings render the foliage and fauna of the sea, others register underwater scenes as unfamiliar worlds of psychological uncertainty. Working in a variety of styles that span from representational to abstract, The selected artists' all participate in a kind of rhythmic process which gives the show a strong sense of depth and vitality.

The exhibition will run from **August 13 – September 24th, 2011**. A reception for the artists will be held at the gallery on Saturday, **August 13th from 5 – 8 p.m** and will include live entertainment.



This exhibition will highlight selected works by current and newly represented gallery artists. The show will include the reconstructed photographs of beach scenes by Rusty Scruby; sea paintings on canvas by Lynn Hanson, sea creature paintings on canvas by Yeun- Mi Lee, surrealist underwater seascapes by Corinne Chaix, as well as many others.

PYO Gallery, LA, is located at 1100 S. HOPE STREET in Los Angeles and is open Tuesday – Saturday from 10 am. – 6 pm and by special appointment. In 2008, the gallery opened in the South Park sector of Downtown Los Angeles to establish a cultural link between Asia and the US. For 30 years, PYO GALLERY in Seoul has earned a reputation as a pioneer in contemporary art and has built a loyal collector base for its roster of artists. The gallery exhibits the work of local and international contemporary artists. Contact the gallery via email at info@pyogalleryla.com or visit the web site www.pyogalleryla.com