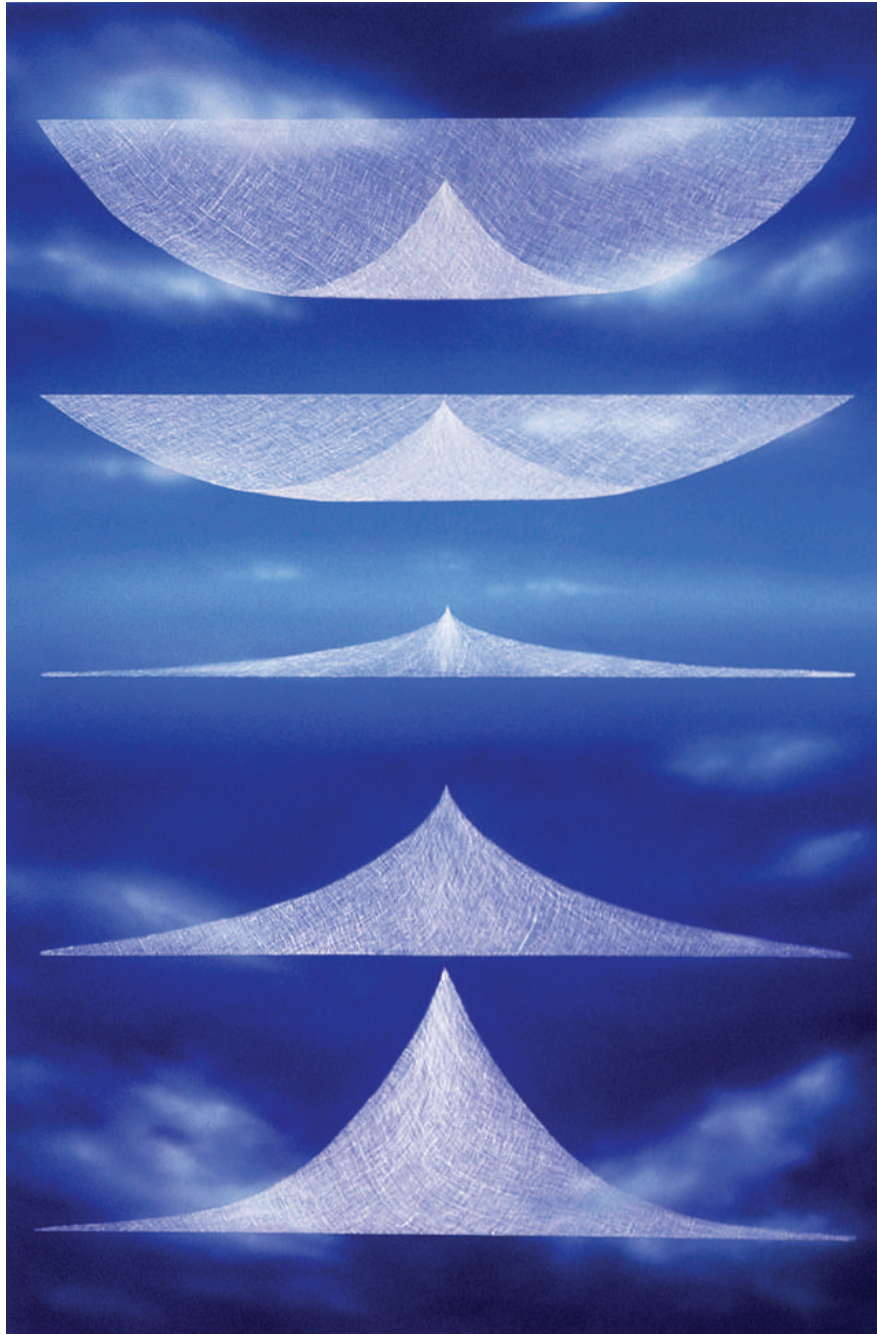




Ji Oh

Selected Artworks



Wide Blue Yonder, 1998, Acrylic & Fabric on Panel, 76 x 48 inches
© Ji Oh 2014

artist statement

My pieces are a result of my explorations as a visual interpreter. As a child, I always wanted to know how things worked, what defined the essence of an object, what its boundaries were, and how far such limits could be pushed. This inquisitiveness profoundly influences my artwork today. I focus on a concept, dissect it to its bare bones, and discover the ultimate truth behind it: then I reinvent it. Through my imagination and obsessive compulsion, I strive to reveal a unique beauty and irony in the seemingly mundane.

In my practice, I strip down traditional mediums to their essence and employ them in contemporary language. In this way, I breathe new life and my own vision into each concept. Dried up paint is delicately placed as colored particles, not a painted surface. Photographs are cut up and woven back together to create a new entity. Fabric is removed from its original source and methodically transformed into sculpture. The resulting works often toe the line between the real and the visually abstract: what you see from afar is completely different from what you see up close. A magnified view reveals layers of details and complexity.

As a translator, I uncover the ironic beauty of an idea and resuscitate it through my experiments with various mediums to create a visually surreal and provocative work.

solo exhibitions

- 2011 PYO Gallery LA, Los Angeles, CA
- 2009 LA Artcore Center, Los Angeles, CA
- 2008 Insa Gallery, Seoul, Korea
- 2004 LA Artcore Center, Los Angeles, CA
- 2001 LA Artcore Brewery Annex, Los Angeles, CA
- 2000 Yemac Gallery, Seoul, Korea
- 1991 South Bay Contemporary Museum of Art, Torrance, CA,
Los Angeles City Hall Rotunda, Los Angeles, CA
- 1990 Mendenhall Gallery, Whittier College, Whittier, CA
- 1989 M.F.A. Show, East Gallery, Claremont Graduate School, Claremont, CA

awards

- 2002 Fellowship for Kawaguchi Art Station, Kawaguchi, Japan
- 1998 Second Prize in the Fifth Annual Visual Art Competition for
the Los Angeles Arts Council Art Scholarship Awards, Los Angeles, CA

selected group exhibitions

- 2014 Invitational Exhibition of 11 Artists in California,
Geoje Art Center, Geoje, Korea
- 2012 LA Art Show, Los Angeles Convention Center, CA
- 2011 Korea International Art Fair, COEX Seoul, Korea
Pop Art of Korea, 3rd Insa Art Festival, Insa Gallery, Seoul, Korea
- 2010 Korea International Art Fair, COEX Seoul, Korea
- 2009 Insa Art Festival, Insa Gallery, Seoul, Korea
World Wide New Year Show, Gallery Western, Los Angeles, CA
- 2008 Art Singapore, Suntec, Singapore
Korea International Art Fair, COEX Seoul, Korea
Asia Top Gallery Hotel Art Fair, Hotel New Otani Tokyo, Japan
Seoul Open Art Fair, COEX Seoul, Korea

curatorial work

- 2006 Hysterical Delight, Lotus Gallery, Los Angeles, CA.
- 2002 S&M- Sublime & Mystique, Zone Six, Los Angeles, CA

“[Ji’s] ideas weave like raw material into formal designs. There is a fresh process and a sense of discovery employed in the act of her painting. Expressed efficiently and succinctly, her symbols and ideas resonate the complex turn of nature that our present times offer.”

David Amico, artist

physical paint collection



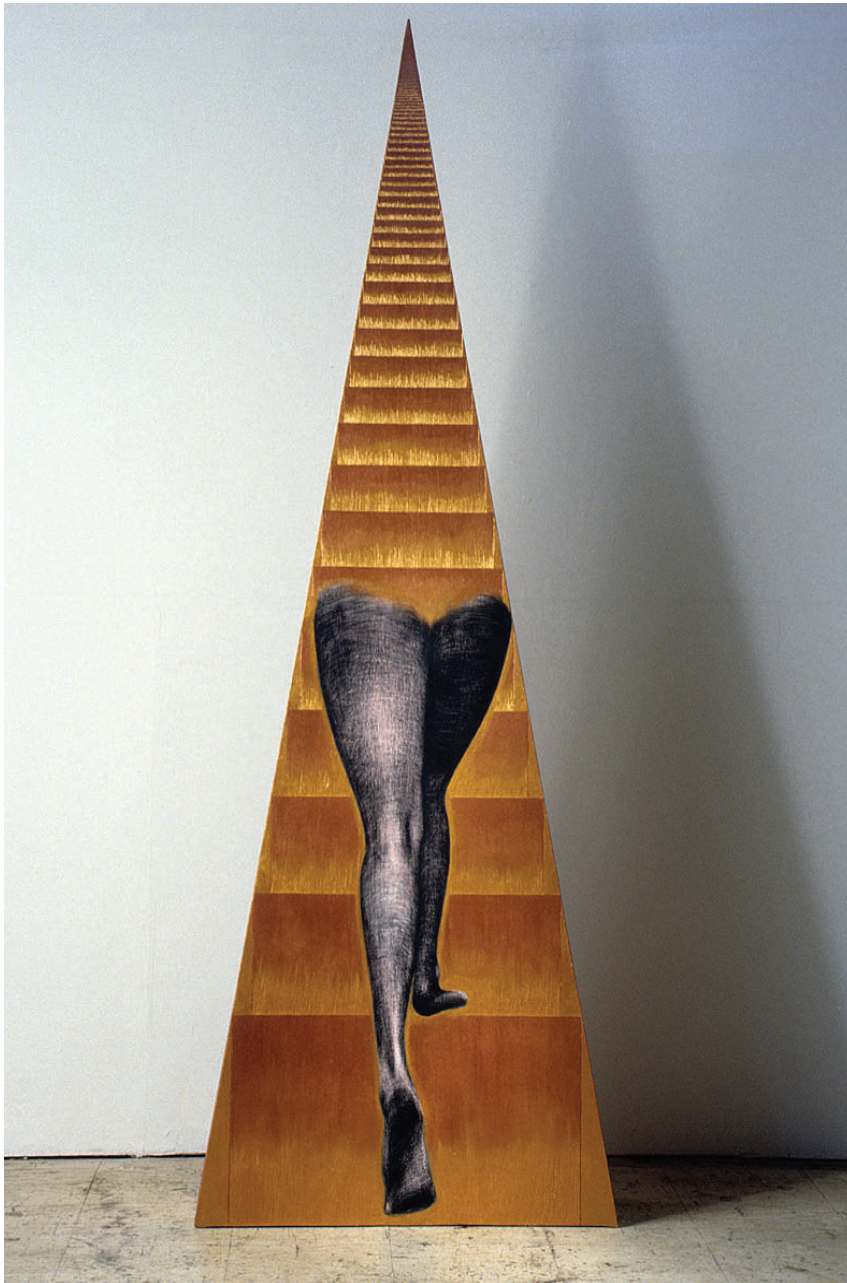
Installation in East Gallery in Claremont, California 1989

© Ji Oh 2014



Installation in Wignall Museum at Chaffrey College, California 1994

© Ji Oh 2014



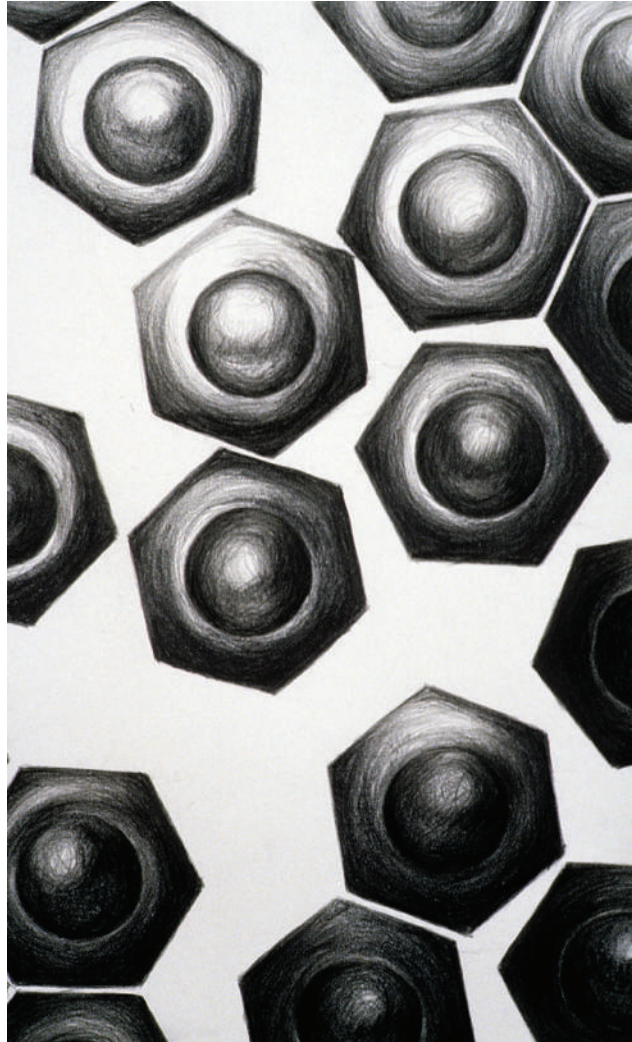
Ascension, 1994, Acrylic on Wooden Panel,
94 x 33 inches
© Ji Oh 2014



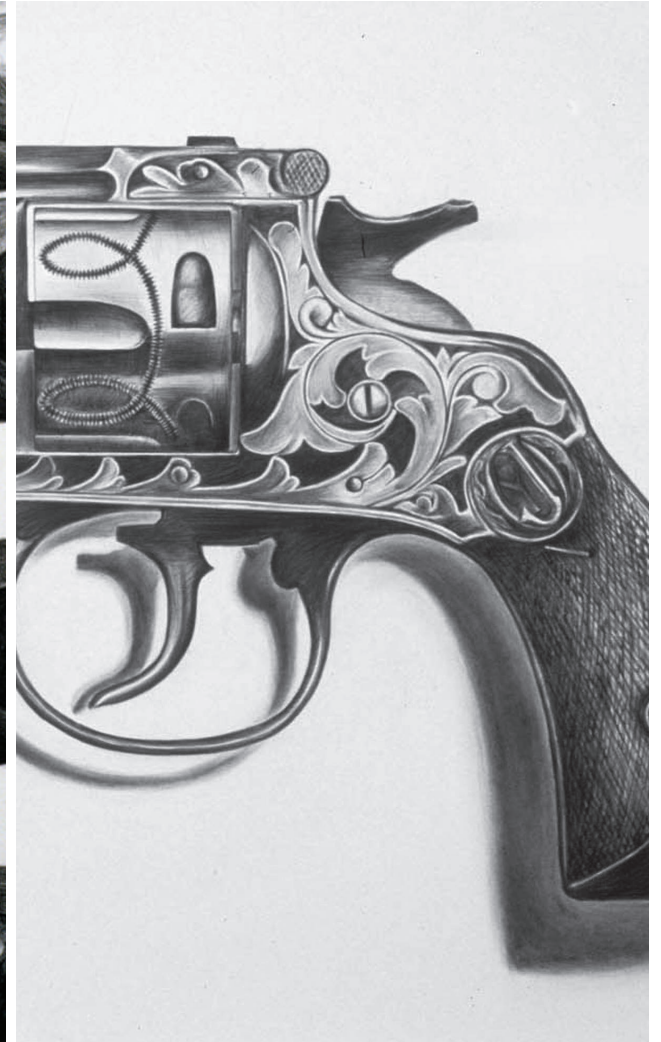
My Pretty Rose Tree, 1996, Acrylic on Panel, 47 x 94 inches
© Ji Oh 2014



A Kinky Ball (Detail), 1997, Graphite on Paper,
© Ji Oh 2014



Lesson of Being (Detail), 1999, Graphite on
Paper, © Ji Oh 2014



1908 Engraved Revolver (Detail), 1998,
Graphite on Paper, © Ji Oh 2014

fabric art collection



Installation in PYO Gallery LA in Los Angeles, California, 2011
© Ji Oh 2014



The Summer Mode (Detail), 1997,
Acrylic & Fabric on Panel, 60 x 36 inches
© Ji Oh 2014



*Cornelia Pronck, 2000,
Acrylic and fabric on Panel,
45 x 33 inches, © Ji Oh 2014*



*The Noble Man, 2001,
Acrylic and fabric on Panel,
45 x 33 inches, © Ji Oh 2014*



*D. Jansz Pesser, 2000,
Acrylic and fabric on Panel,
45 x 33 inches © Ji Oh 2014*

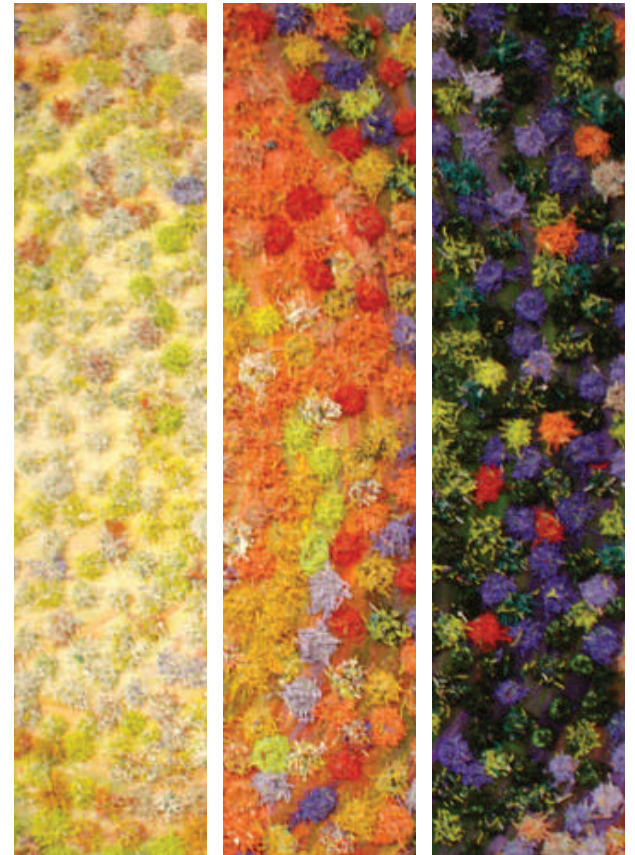
luminary collection



Installation in LA Artcore, Los Angeles, California, 2009
© Ji Oh 2014



Passion of Serat, 2004, Mixed Media, 23 x 23 inches
© Ji Oh 2014



Detail
© Ji Oh 2014



Blue Fire, 2000, Mixed media,
24 x 24 inches, © Ji Oh 2014

girl's best friend series



left: *Blue Diamond*,
2007, Mixed Media,
15 x 15 inches,
© Ji Oh 2014



right: *Gemstones*,
2006, Mixed Media,
15 x 15 inches,
© Ji Oh 2014



left: *Nine of Diamonds*,
2006, Mixed Media,
15 x 15 inches,
© Ji Oh 2014



right: *Morganite*,
2007, Mixed Media,
15 x 15 inches,
© Ji Oh 2014



Small Works on the Wall, 13x10 inches each
© Ji Oh 2014

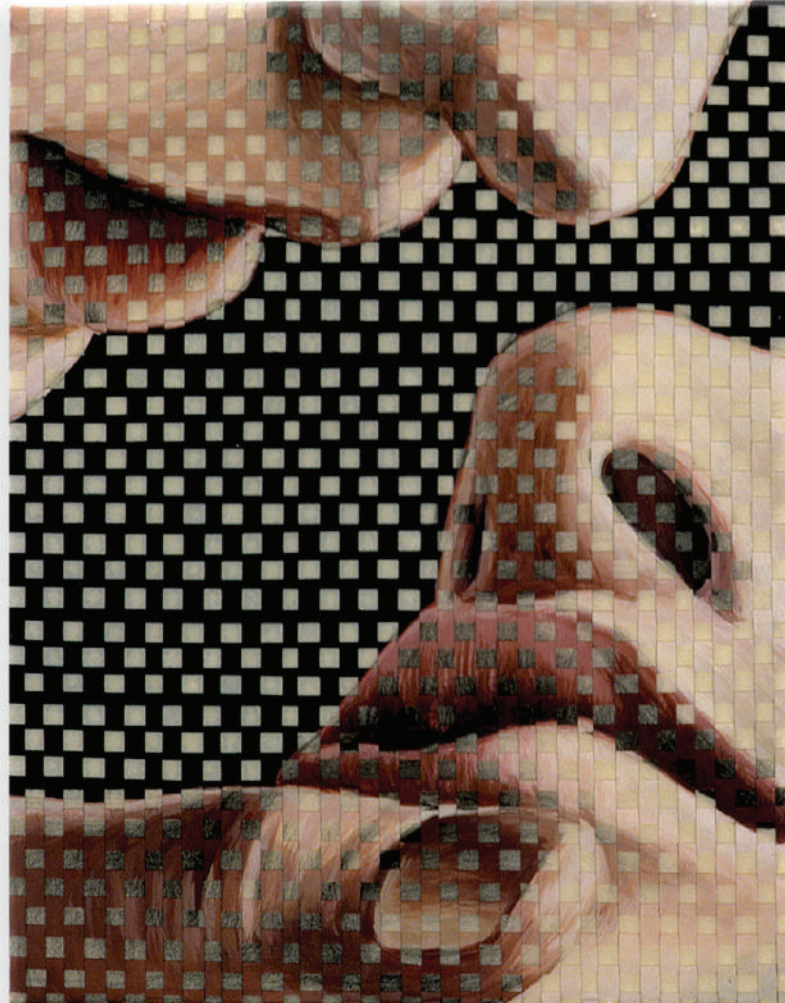
woven soul collection



Installation in INSA Gallery, Seoul, Korea, 2008
© Ji Oh 2014



Odalisque Now, 2008, Mixed Media, 36 x 36 inches
© Ji Oh 2014



Anticipation, 2000, Mixed Media, 13 x 10 inches
© Ji Oh 2014

kinetic art

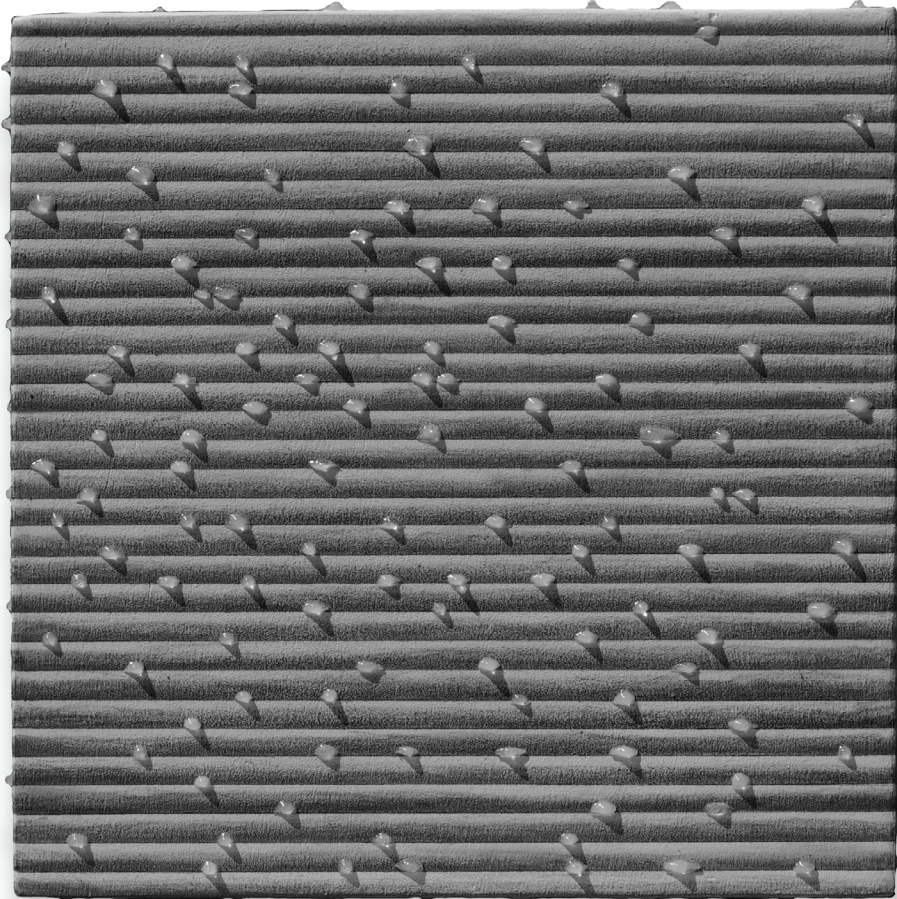


Pipe Dreams, Mixed Media, 2011

Installation Video: https://www.youtube.com/watch?v=-2_X8qZL-20

© Ji Oh 2014

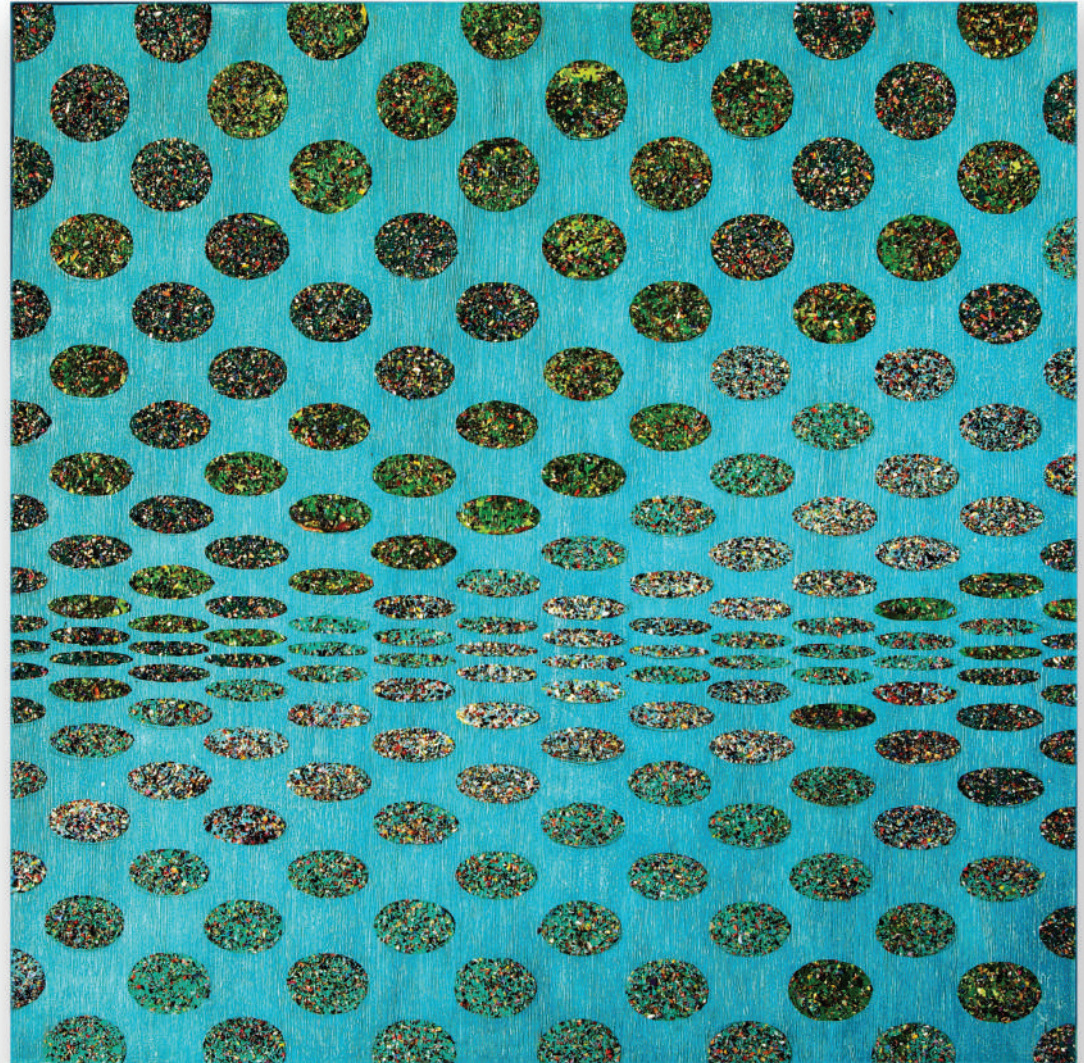
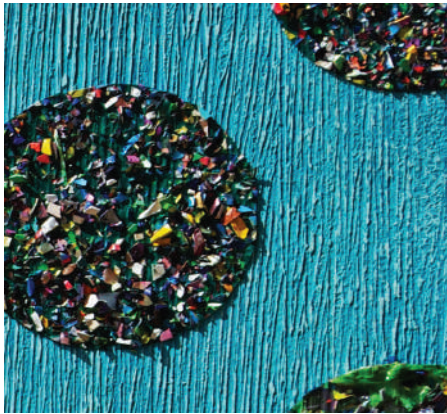
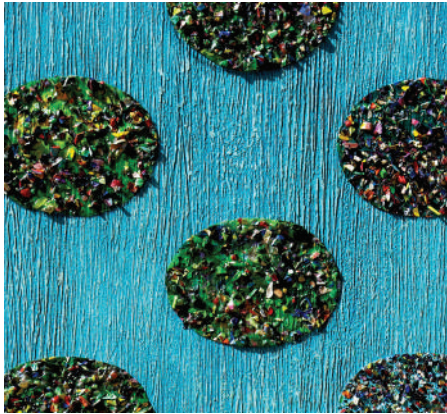
rhythmic infinity collection



After the Rain, 2011, Graphite & Resin, 15 x 15 inches,
© Ji Oh 2014



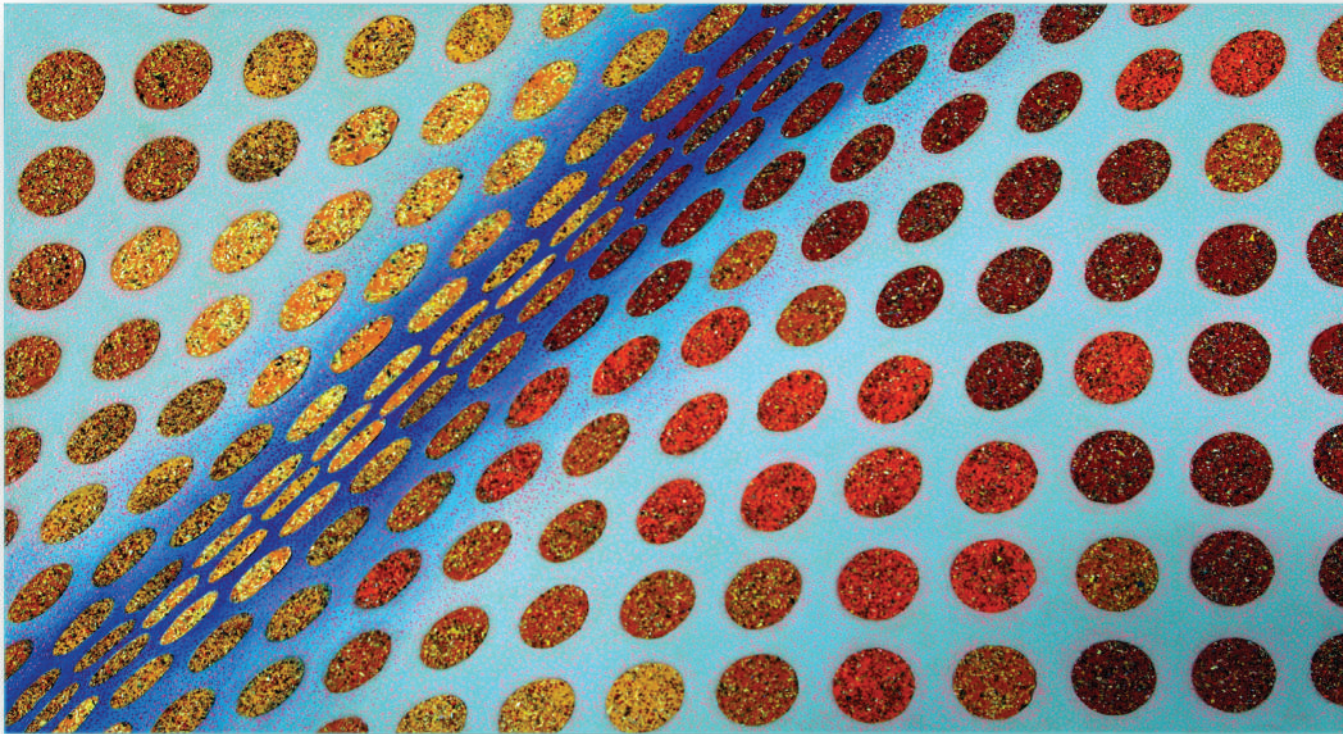
After the Rain, Side View
© Ji Oh 2014



Jewels On the Lake II (and Detail), 2012, Acrylic on Panel, 35 x 35 inches
© Ji Oh 2014



Succulents, 2012, Acrylic & Fabric on Panel, 29 x 29 inches
© Ji Oh 2014



Jewels On the Lake III, 2012, Acrylic on Panel, 26 x 42 inches, © Ji Oh 2014

bio

Born in Kwang-Ju, South Korea, Ji Oh immigrated to Los Angeles with her family in 1980. She received her BFA from California State University, Fullerton and her MFA from the Claremont Graduate University. She has exhibited her artwork extensively at museums and galleries throughout the United States and internationally, including Australia, Japan, Korea, Mexico, and Singapore. In 2002, Ji Oh was commissioned by the Kawaguchi Art Station in Kawaguchi, Japan to create art for the Lilia Cultural Center, and her work now resides in their permanent collection. Her most recent shows include solo exhibitions at PYO Gallery in Los Angeles and INSA Gallery in Seoul, South Korea. In addition to being a guest art history lecturer at Patten University in Los Angeles, she was an instructor in painting and drawing at Idyllwild Art Academy. In 2013, she presented a lecture series on contemporary and post modern art at the Lynn J. Gallery in Buena Park California titled "Love Art to Hate Art." Ji is currently in her 24th year of teaching at Ji's Art Studio in Whittier, California.