

Nan Chao TRIP ON THE ROAD

PYO GALLERY LA 1100 S. Hope Street, Suite 105, Los Angeles, CA 90015, USA

Los Angeles, August 16, 2008.
Based in Korea and Beijing, the new PYO Gallery LA, downtown, is pleased to announce a cutting-edge, avant-garde exhibition featuring the young and rising Chinese artist, Nan Chao. He notably belongs to the Next Generation of Chinese artists who strive to break from traditional Chinese convention.

His works go beyond arousing aesthetic pleasure; they exemplify the new generation's struggles with the boundaries brought on by traditional Eastern and contrary Western values. His style boasts the illusion of traditional Eastern ink painting by using the vivid and painterly brushstrokes of Western oil painting; a profound expressionism that defines a cultural revolution. He juxtaposes ancient Asian landscapes and modern, young adults, creating a harmony imitating the significance of this identity confusion that is transforming his generation.

Please join us on Thursday, August 14 Art Walk from 6pm-9pm and our formal opening reception Saturday, August 16 from 6pm-9pm.

PYO GALLERY LA
1100 S. Hope Street, Suite 105,
Los Angeles, CA 90015 USA
+213.405.1488 †
+213.405.1489 †
info@pyogalleryla.com

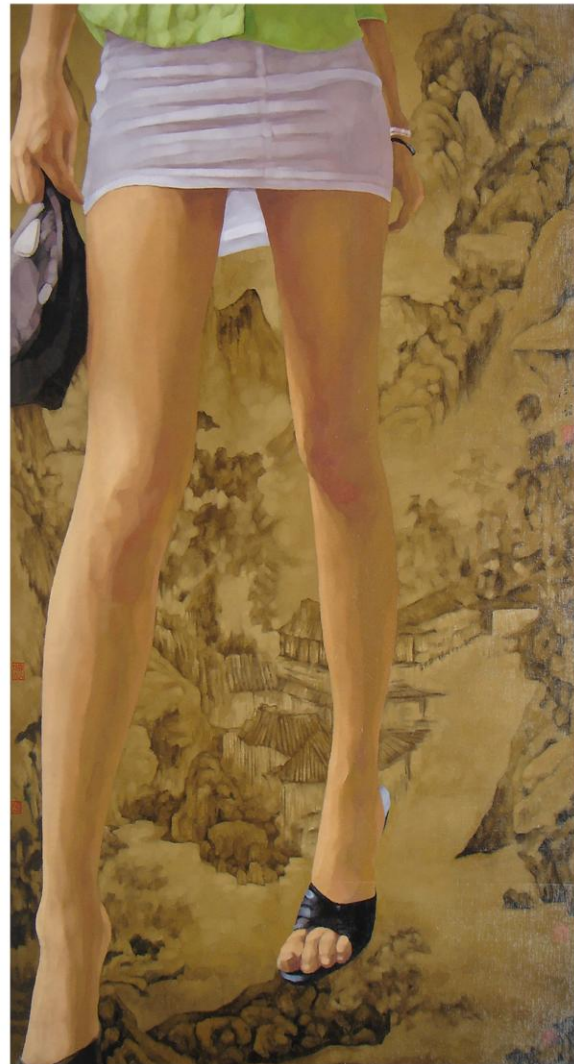


Trip on the Road No.54, Oil on Canvas (2007)
88 in x 78 in

www.pyoart.com

For media inquires or high-resolution images, please contact Heidi Chang
+213.405.1488 †
+626.535.3310 m
heidi@pyogalleryla.com

PYO GALLERY LA



Clockwise from top: *Trip on the Road No. 32*, Oil on Canvas (2006) 42 x 39 in.; *Trip on the Road No.12*, Oil on Canvas (2006) 47 x 32 in.; *Cool God of Gates No. 4*, Oil on Canvas (2006) 79 x 59 in

PYO GALLERY LA

1100 S. Hope Street, Suite 105, Los Angeles, CA 90015, USA 213.405.1488 t, 213.405.1489 f,
info@pyogalleryla.com

PYO GALLERY SEOUL

258-79 Itaewon-Dong, Yongsan-Ku, Seoul, Korea +82.2.543.7337 t, +82.2.790.0595 f, pyogallery@korea.com

PYO GALLERY SOUTH

B112 Naturepoem Building 118-17 Chungdam-Dong, Gangnam-Gu, Seoul, Korea, +82.2.511.5295 t,
82.2.511.5297 f

PYO GALLERY BEIJING

Jiuchang Art District, Beihuqu Rd. Anwaibeyuan St. Chaoyang District, Beijing, China +86.10.5202.3814 t

PYO GALLERY 798

798 Art District No.4, Jiuxianqiao Road, Chaoyang District, Beijing, China +86.10.8459.9313 t,
pyogallery@163.com

www.pyoart.com <http://beijing.pyogallery.com>

(End)

